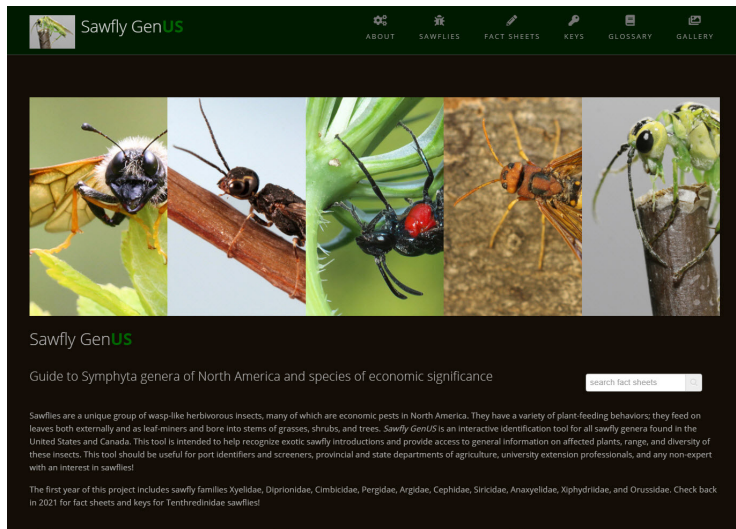


ITP's newest identification tool is here!

Sawfly GenUS, Edition 1

Quinlyn Baine, Chris Looney, David R. Smith, Nathan M. Schiff, Henri Goulet, and Amanda J. Redford

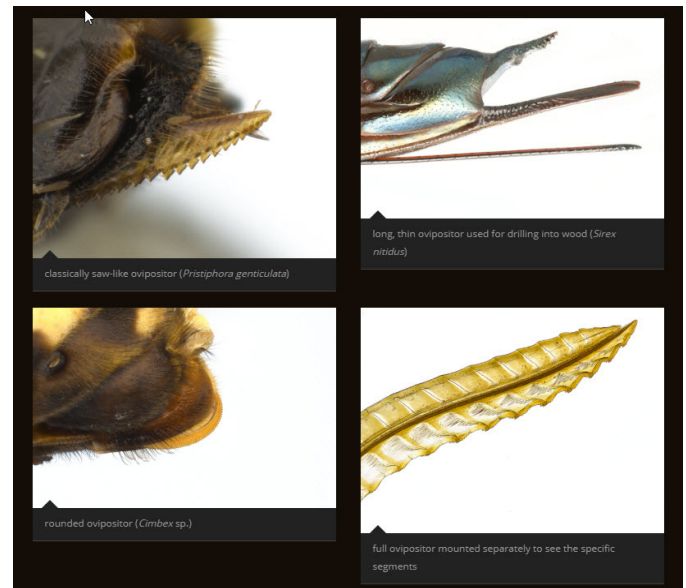
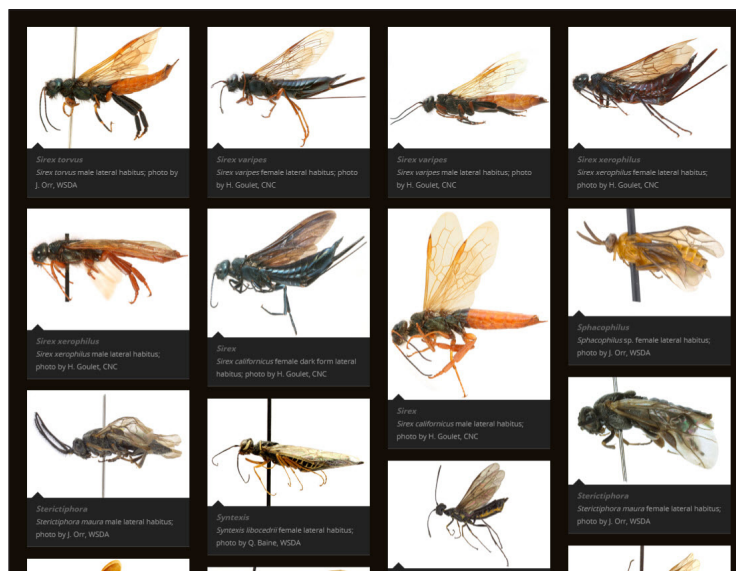
<https://idtools.org/id/sawfly/>



Sawflies are a group of primarily herbivorous Hymenoptera, many of which are economic pests. Much of the technical literature available for sawflies is decades old. Relatively few identification tools have been developed that take advantage of modern improvements in taxonomy, photography, and the functionality of matrix-based identification keys. *Sawfly GenUS* includes all of these, with features that allow experts and non-specialists alike to identify sawflies to the generic level. Edition 1 includes fact sheets and keys for sawfly genera, excluding the most diverse family Tenthredinidae, and for species of *Sirex*, which are frequently intercepted at ports around the world.

Sawfly GenUS offers users materials to assist in accurate and efficient identification of sawflies:

- info on sawfly biology, morphology, and classification
- guide for how to handle sawfly specimens
- filterable image gallery
- searchable fact sheets
- two interactive Lucid keys



Screenshots from the tool: above, the "Is it a sawfly?" page illustrates variation in sawfly ovipositors, and left, the filterable image gallery allows users to quickly compare taxa

Sawflies in the family Tenthredinidae will be included in the tool after the completion of year 2 of the project. Look for these genera in Edition 2 in 2021!

Sawfly GenUS is one of 45 online identification tool websites produced by the USDA Identification Technology Program (ITP). To learn more about ITP's products, including mobile apps and image collections, please visit <https://idtools.org> or email the ITP team in Fort Collins, CO at itp@usda.gov.