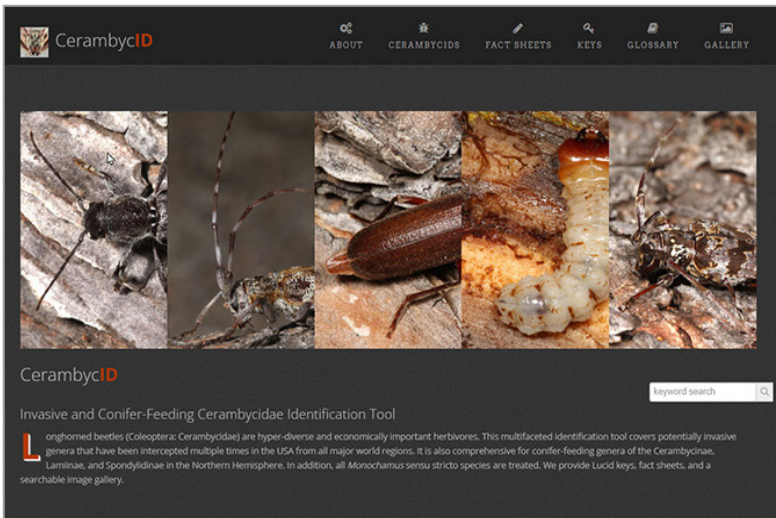


ITP and Michigan State University present

Cerambycid

Authors: Patrick Goring, Anthony Cognato, Sarah Smith, and Amanda Redford

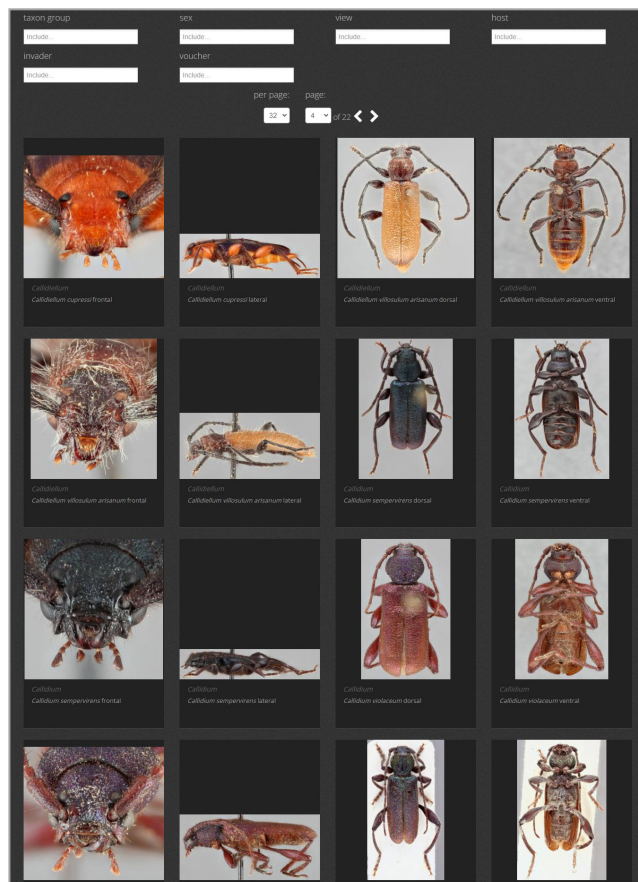
<https://idtools.org/wbb/cerambycid/>



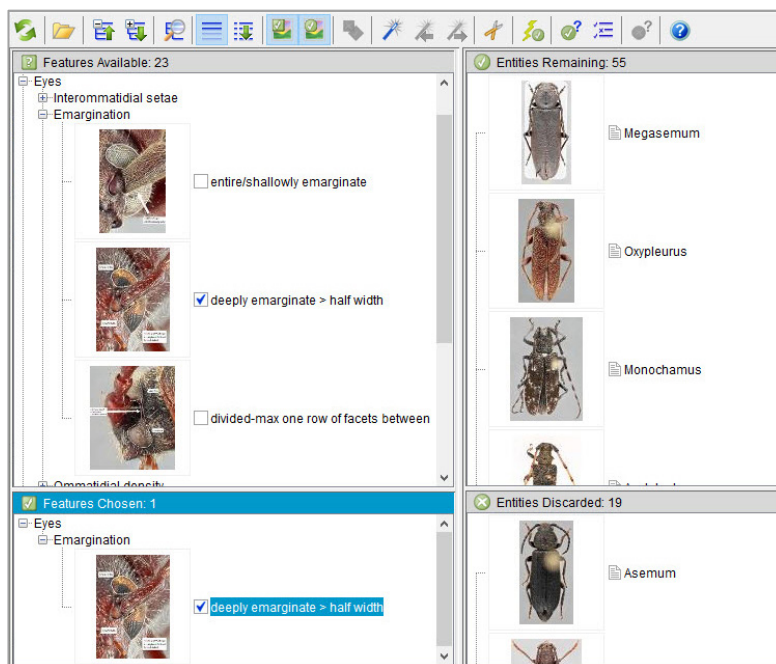
Longhorned beetles (Cerambycidae) are world-wide in distribution and feed on diverse plant types. Invasive cerambycid beetles pose a threat to U.S. plants. Correct identification of these cerambycids is important for urban landscapes, forest products, and native ecosystem health. *Cerambycid* focuses on the identification of conifer-feeding and regularly intercepted invasive genera, along with the species of *Monochamus* that feed on conifers. *Cerambycid* is an interactive, visually rich, and informative resource intended for PPQ identifiers and researchers.

Cerambycid offers users a variety of resources to aid in the accurate identification of longhorned beetle genera:

- three Lucid matrix-based interactive identification keys
- filterable, “visual key” style image gallery
- illustrated fact sheets featuring thorough diagnoses



Screenshots from the tool: above, image gallery with a variety of filter options; at left, the Lucid interactive key showing the “Eye emargination: deeply emarginate > half width” feature-state selected.



Cerambycid is one of 50 online identification tool websites produced or hosted by the USDA Identification Technology Program (ITP). To learn more about ITP’s products, including mobile apps and image collections, please visit <https://idtools.org> or email the ITP team at itp@usda.gov.